



LUXER BOARD

FOR THE BUILDINGS OF TOMORROW

Beauty, Natural and Modern

Installation Book



**ASBESTOS
FREE**

LUXER BOARD has an Advantages :



ASBESTOS
FREE



STRONG &
DURABLE



MOISTURE
RESISTANT



EASY
APPLICATION



FIRE
RESISTANT



FUNGI
RESISTANT



SOUND
INSULATION



TERMITES
RESISTANT



SMOOTH
SURFACE

PT. Bangunperkasa Adhitamasentra

is one of the biggest fiber cement board manufacturer in Indonesia.

LUXER BOARD is made from mixture of cement and cellulose fiber and other additives so it is strong, durable and asbestos free.

The first plant was located in Citeureup, west Java, this plant was established since 1992 and have started the production in 1994, and we established the second plant in 2010, which was located at Karawang and the third plant at Jombang East Java which started operating in 2020. The technology applied is from Japan and equivalent with international standards product quality.



Luxer Board specifications include:



*ISO 9001:2015 quality management system
for non-asbestos cement board production.*

*ISO 140 soundproofing standard for building
elements.*



*Fire resistance according to SNI 1741-2008
results equivalent to JIS 1304.*

Incombustibility based on AS 1530.1-1992



*Gold green label certificate from the Green
Product Council Indonesia.*



CE Mark Certificate.



*Australian standard AS/NZS 2908.2.2000
Lic: SMK41466
SAI GLOBAL*

TABLE of CONTENTS

BOARD APPLICATION 6-11

LUXER BOARD

- I. ADVANTAGES**
- II. PRODUCT INFORMATION**
 - A. The Function of LUXER BOARD
 - B. Size and Application
 - C. Edge Profile
 - D. How to Handle
 - E. Finishing
 - F. Cutting
 - G. Framing
 - H. Nails and Screws
- III. CEILING APPLICATION**
 - A. Framing Option
 - B. Frame Distance and Board Installation
 - C. Jointing Ceiling Application
- IV. PARTITION APPLICATION**
 - A. Modul Type and Partition Frame
 - B. Partition Finishing
- IV. FLUSH JOINT SYSTEM ON INTERNAL APPLICATION**
 - A. Term and Condition That Have to be Notice Before Jointing
 - B. How to do Flush Joint
 - C. Expansion Joint

III. CONSTRUCTION AND DETAIL OF APPLICATION

- A. Frameworks
- B. Screws Position
- C. Joint
- D. Finishing

PLANK & PLINT APPLICATION 14-17

- I. ADVANTAGES**
- II. PRODUCT INFORMATION**
 - A. Function
 - B. Size and Application
 - C. Cutting
 - D. Nails and Screw
- III. CONSTRUCTION AND DETAIL OF APPLICATION**
 - A. Plank
 - 1. Frames
 - 2. Screw Position
 - 3. Joint
 - 4. Finishing
 - B. Siding Plank
 - 1. Frames
 - 2. Screw Position
 - 3. Joint
 - 4. Finishing
 - C. Plint
 - 1. Screw Position
 - 2. Joint
 - 3. Finishing

CLADDING APPLICATION 12-13

LUXER CLADDING

- I. ADVANTAGES**
- II. PRODUCT INFORMATION**
 - A. Function
 - B. Size and Application
 - C. Cutting
 - D. Nails and Screws

INTERLOCK APPLICATION 18-19

LUXER INTERLOCK

- I. **PRODUCT INFORMATION**
- II. **PRODUCT DISPLAY**
- III. **INTERLOCK APPLICATION**
- IV. **INTERLOCK SCREW POSITION**
- V. **INTERLOCK INSTALLATION**

FLOOR APPLICATION 20-21

LUXER FLOOR

- I. **ADVANTAGES**
- II. **PRODUCT INFORMATION**
 - A. Function
 - B. Size and Application
 - C. Cutting
 - D. Nails and Screws
- III. **CONSTRUCTION AND DETAIL OF APPLICATION**
 - A. Framing Option
 - B. Screws Position
 - C. Joint
 - D. Finishing

DECK APPLICATION 22-23

LUXER DECK

- I. **ADVANTAGES**
- II. **PRODUCT INFORMATION**
 - A. Function
 - B. Size and Application
 - C. Cutting
 - D. Nails and Screws
- III. **CONSTRUCTION AND DETAIL OF APPLICATION**
 - A. Framing Option
 - B. Screws Position
 - C. Joint
 - D. Finishing

DECORATIVE APPLICATION 24

- I. **ADVANTAGES**
- II. **PRODUCT INFORMATION**
 - A. Function
 - B. Size and Application
 - C. Cutting
 - D. Nails and Screws
- III. **CONSTRUCTION AND DETAIL OF APPLICATION**
 - A. Framing Option
 - B. Screws Position
 - C. Joint
 - D. Finishing

PRODUCT TECHNICAL DATA FORM

ACCESSORIES APPLICATION 28

- A. LUXER Nails
- B. LUXER Screws
 - LUXER Screws for 4 mm
 - LUXER Screws for $\geq 5 - 8$ mm
 - LUXER Screws for 9 - 15 mm
 - LUXER Screws for $\geq 15 - 20$ mm
- C. Compound A + B
- D. LUXER Tape
- E. LUXER Putty

BOARD APPLICATION



LUXER BOARD is Fiber reinforced cement board which is safe for health

LUXER BOARD

I. ADVANTAGES

- LUXER BOARD is Fiber reinforced cement board which is safe for health (free asbestos), that give the board characteristics of light, resistant to humidity and strong.
- It is also resistant to fungus and termites makes the building good in quality and ensures that building would be durable and easy to maintain.
- The board has smooth surface that it could be directly without having to polished the board first.
- Easy to handle and apply, which save time on installation
- LUXER BOARD has passed the following test:
 - a. ISO 9001:2015 for design/ development and manufacture of non asbestos fiber cement board
 - b. Fire Resistant, based on the result of the test SNI 1741-2008, September 2015
 - c. Sound Insulation, ISO 140: Puslitbangkim
 - d. Free asbestos, as flat cement board non asbestos
 - e. Gold Certificate from Green Product Council Indonesia

II. PRODUCT INFORMATION

A. The Function of LUXER BOARD

LUXER BOARD product could be applies as internal application (protected from the weather) such as wall partition application and ceiling. LUXER BOARD usually is applied on offcie buildings, factories, hotels, school, real estates, apartments, hospitals and etc.

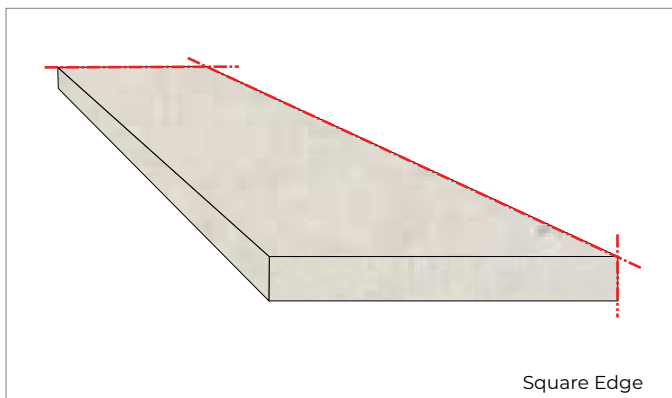
B. Size and Application

T x W x L (mm)	Weight (Kg)	Application
3,5 x 1220 x 2400	17	Ceiling
4 x 1220 x 2440	19,6	
4,5 x 1220 x 2440	21,5	
6 x 1220 x 2440	28	Ceiling & Partition
8 x 1220 x 2440	38	Partition
10 x 1220 x 2440	52.1	

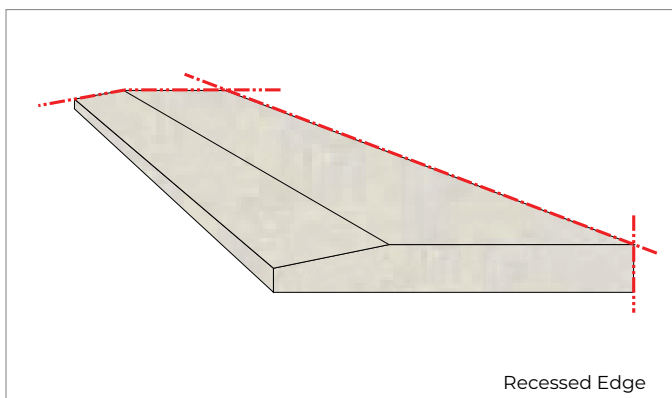
C. Edge Profile

LUXER BOARD is provide two types of edge profile, Square Edge(SE) and Recessed Edge (RE)

- LUXER BOARD Square Edge (SE) is installed on the open joint system

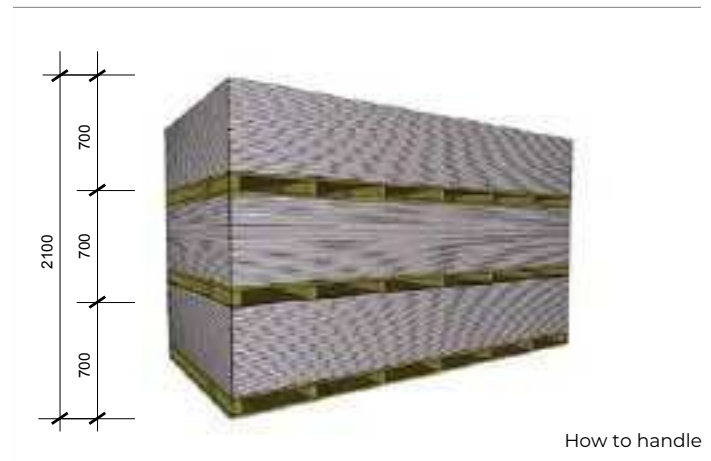


- LUXER BOARD Recessed Edge (RE) is installed on the application which requires flush joint system because it give smooth finish.

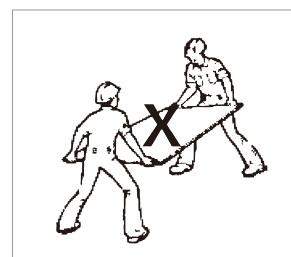
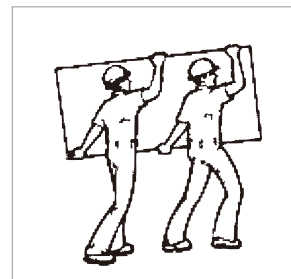


D. How to Handle

LUXER BOARD product have to be stored in closed and dry area (not humid). For open storage we recommend to cover the product with plastic or tarpaulin to avoid the weather.



Please notice about how to handle and lift LUXER BOARD correctly, to prevent the risk of damage an the board.



E. Finishing

The Surface of LUXER BOARD could be painted directly by paint (all kind of paints) without polish it first bathroom or kitchen wall application LUXER BOARD could be covered by tiles using tile adhesive. For bathroom wall application or area which has high humidity, it is recommended to cover the LUXER BOARD with waterproofing before it would be installed to stabilize the board.

F. Cutting

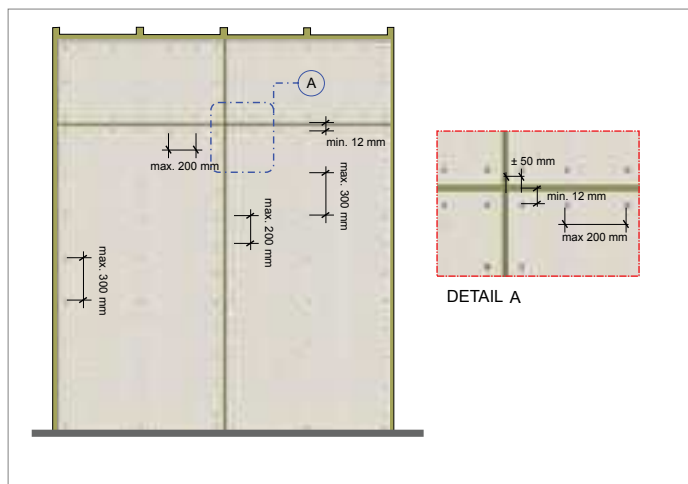
- LUXER BOARD which has thickness 3,5 mm, 4,5 mm and 6 mm could be cut by cutter or saw. For board which has thickness 8 mm and 10 mm could be cut using circular saw or chainsaw.
- For Smoothing the edge of the board that was cut, we recommend to use grinder or sandpaper.

G. Framing

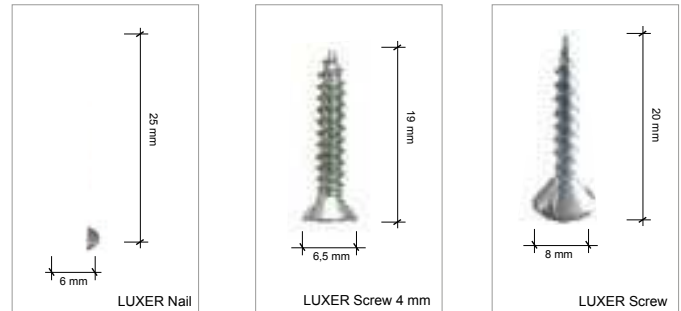
- LUXER BOARD could be applies on wood frame sized 40/60 mm or 50/70 mm, it is recommended to apply dried timber to avoid shrinkage.
- LUXER BOARD could also be applied on metal frame such as: galvanized steel, metal furring, stud steel and another type of metal frame which has thickness 0.35 mm – 1.2 mm.
- The right method of frame installation is crucial in supporting the result of LUXER BOARD application.

H. Distance of Nails and Screws

- The minimum distance between nails or screws with the corner of LUXER BOARD is +/- 50 mm.
- The minimum distance between nails or screws with the edge of LUXER BOARD is min 12 mm.
- The Maximum distance between nails and screws is not more than 200 mm (on the side of board) and not more than 300 mm (on the middle of the board).
- The Application of nails or screws on the joint is recommended to applied in a crisscross manner.



I. Nails and Screws



A. Nails

For LUXER BOARD application which is sustained by wood framework could apply LUXER nail. This nail has better strength than a common nail, so it is very suitable for LUXER BOARD application.

B. Screws

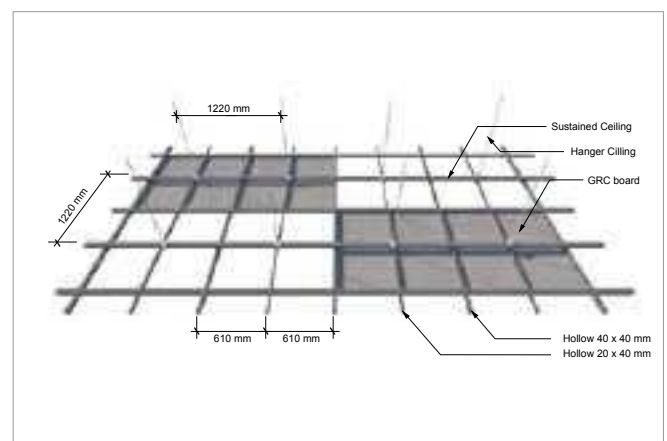
For LUXER BOARD application which is sustained by metal framework could apply LUXER Screw for 4 mm and LUXER Screw for $\geq 5 - 10$ mm. This Screw has a head equipped with fins and double thread. So it's easier to be countersunk, when it's applied.

III. CEILING APPLICATION

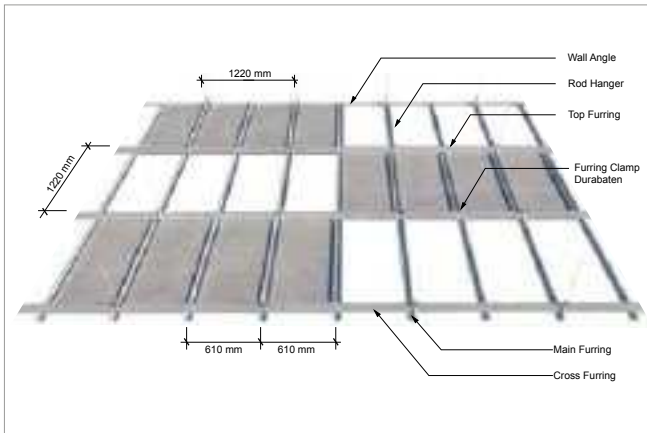
LUXER BOARD could be applied on all kind of ceiling and also on kind of frame, and all type of joint, open joint or flush joint system.

A. Type of frames

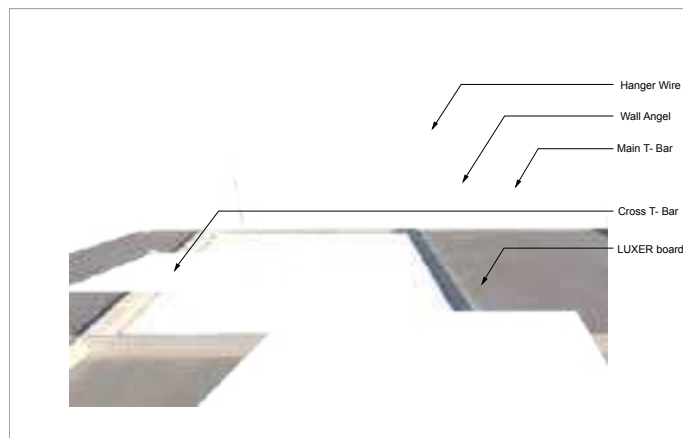
- Wood frames 40/60 mm or 50/70 mm.
- Hollow combination 40/40 mm and 20/40 mm which has minimum thickness 0,35 mm (full)



3. Cross Furring system (minimum thickness 0,35 mm).

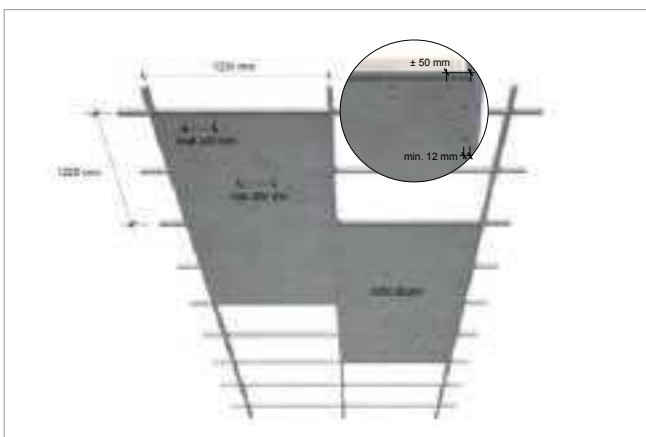


4. Main tee Cross Frame, for ceiling lay in application.
For this application, the board that is usually applied LUXER BOARD which has the dimension 6x600x1200 mm and 6x600x600 mm without drills.

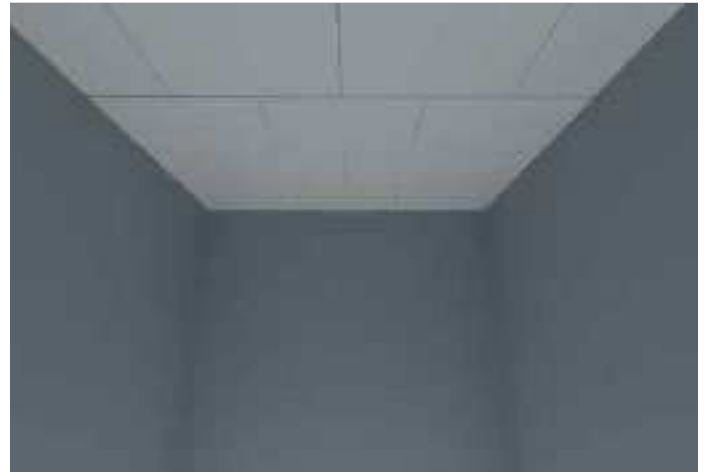


B. The Distance of Frame and Board Application

1. We recommend to provide the distance between frames is 610 x1220 mm for ceiling application.

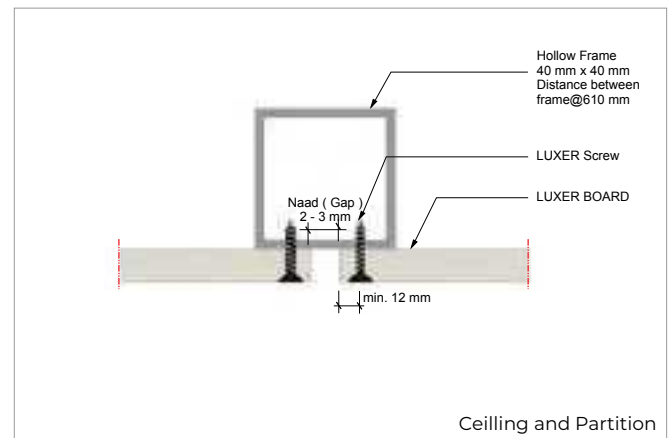


2. LUXER BOARD for Ceiling application is recommended to be installed not parallel.

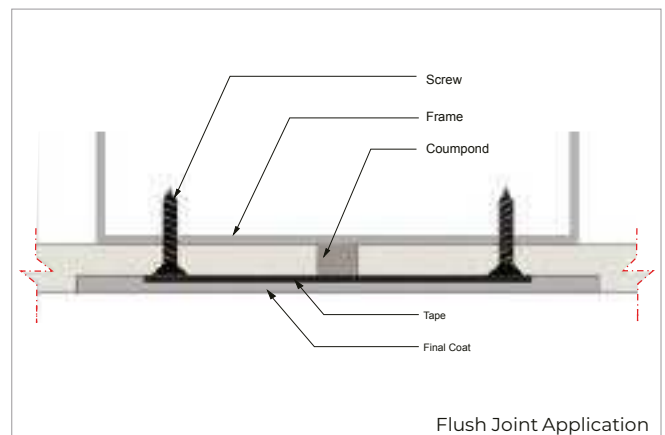


C. Ceiling Application System

1. Open Joint Application.



2. Flush Joint Application.

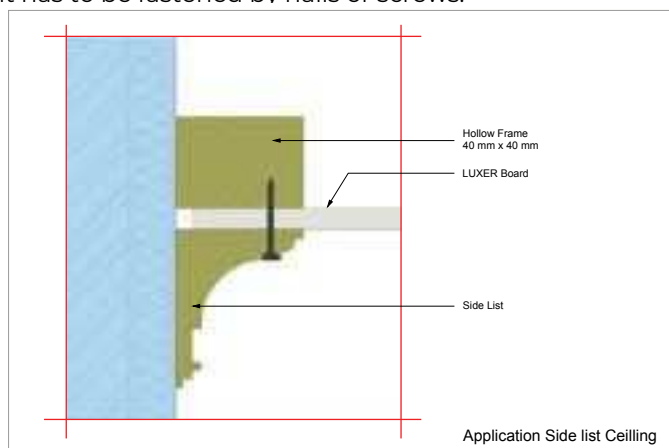


3. Lay-in Ceiling Application.



The Application of the side list on Ceiling

For the Application of the side list on LUXER BOARD ceiling, it has to be fastened by nails or screws.



IV. PARTITION APPLICATION

A. Type and size of frames

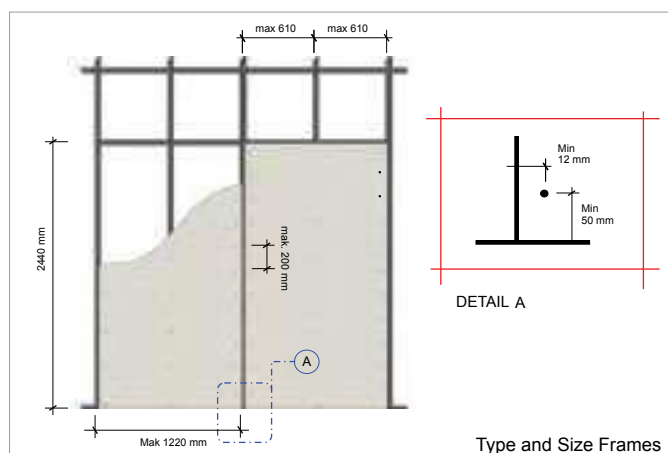
Frame Types:

- Wood 50/70 mm
- Hollow Frame (minimum Thickness 0.4 mm)
- Metal Frame (minimum thickness 0.4 mm)

B. Partition Finishing

The Application of board

LUXER BOARD can be applied as partition and can be finished by paint, wallpaper and ceramic tile.

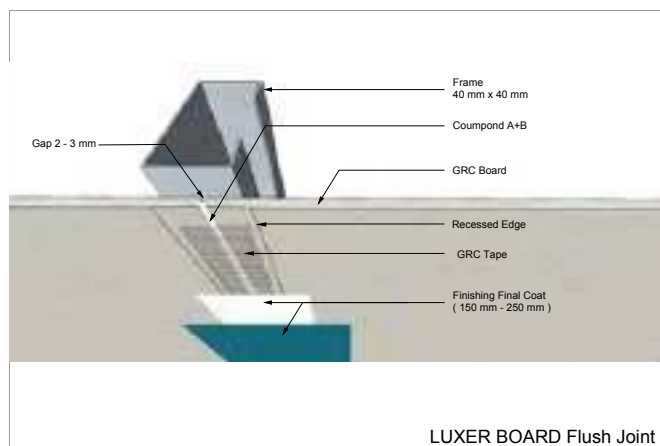


V. FLUSH JOINT SYSTEM ON INTERNAL APPLICATION

The most important thing on LUXER BOARD application is to prevent the crack on the joints which is usually on the fiber cement board LUXER BOARD has the right solution to prevent that problem by following the procedure of the application.

A. Important things to note before applying flush joint system:

1. Ensure that the boards to be applied are dry.

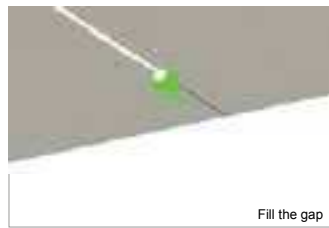


2. Allow gap about 2-3 mm between the edges of the boards.
3. The frames which are installed have to hold the edge of the boards. It is recommended to apply the boards that have recessed edge for flush joint system.

4. The distance and application of screws have to be correct.
5. Ensure that the material which is applied on joint application suits our recommendation:
 - a. Compound A + B is applied as a compound which fill into the gap between the boards.
 - b. LUXER Tape as a cover of the joint
 - c. LUXER PUTTY as the finishing of the joint

B. The Procedure of Flush Joint application

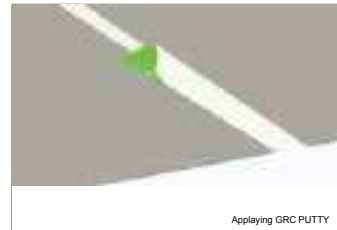
1. First Step (Compound A+B and LUXER tape)
 - a. Mix the Compound A+B sufficiently with ratio 1:1 and then stir it until it's mixed
 - b. Fill the gap between the boards with the Compound A+B compound using little spade.
 - c. After the gap was filled with the Compound A+B, place the LUXER tape on the surface of the joint and then let the compound dried for minimal four hours.
2. Second Step (Applying LUXER PUTTY)
 - a. After the first step is completely dry, apply LUXER PUTTY compound to cover the surface of the joint.



- b. Then use sandpaper to get best result to smoothen the surface.

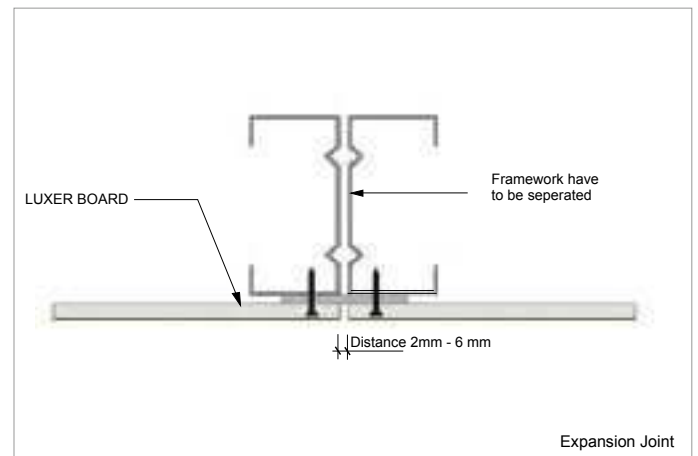
3. Expansion Joint

Expansion Joint is required for application in large area to prevent which usually happen beacuse of the changing



weather, high humidity or structural. Expansion joint for ceiling is applied on every ± 70 m2 meters.

For expansion joint application, the gap between boards could be exposed, or covered by PU (polyutherane Sealant).



Fire Resistant

CLADDING APPLICATION



LUXER CLADDING

I. ADVANTAGES

LUXER CLADDING is fiber cement board product which has LUXER BOARD higher level of durable compare to LUXER BOARD, so even the thickness of the board is relatively thin the character of the panel is more durable and more resistant to the weather.

II. PRODUCT INFORMATION

A. Function

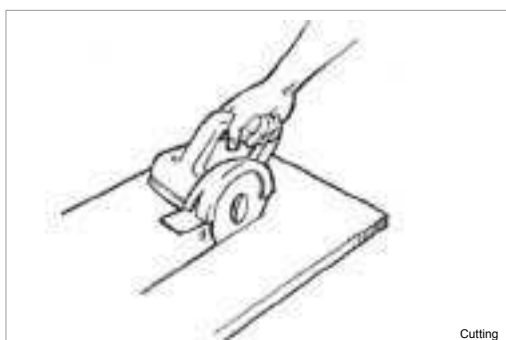
LUXER CLADDING is very suitable and practical to be applied as exterior application to deal with extreme weather.

B. Size and Application

T x W x L (mm)	Weight (Kg)	Application
9 x 1220 x 2400	45,5	Cladding/Facade
12 x 1220 x 2400	56	

C. Cutting

For cutting the panel it is recommended to use circular saw or grinder which is equipped with blade that could cut stones.

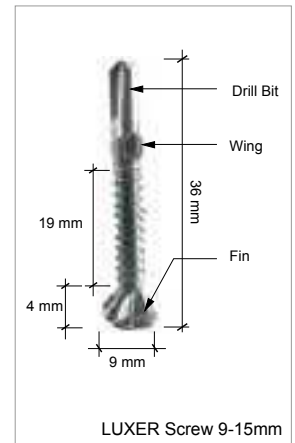


D. Screws

1. Screws.

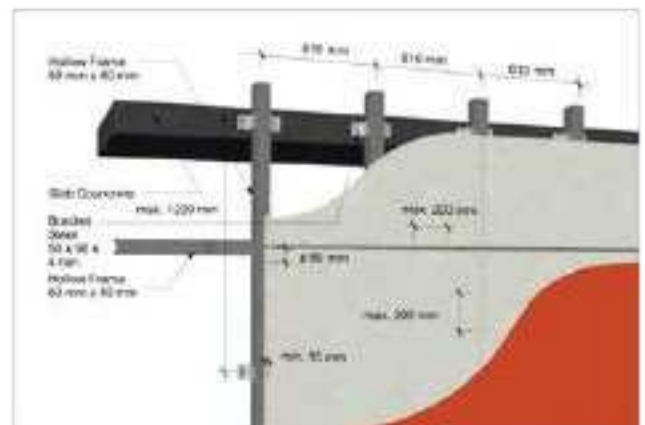
For LUXER CLADDING application which is sustained by metal framework could apply LUXER Screw 9-15mm.

This Screw is design to have it's own bit drill (self-drill) so it could pierce and through the metal framework which has thickness 3 mm. If the frame applied is thicker, the framework has to be countersunk first by metal drill.



III. CONSTRUCTION AND DETAIL OF APPLICATION

1. Frameworks.

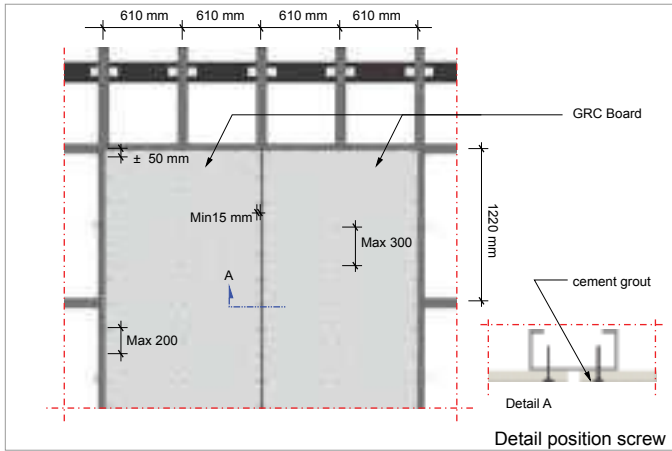


- Vertical frame that could be applied such as:
 - Furring channel 75 x 45 x 1.6 mm.
 - Hollow 60 x 40 x 1.6 mm (min).
 - L plat 50 x 50 x 5 mm (min)
- Horizontal frame could apply metal frameworks CNP 75, 100 and 125.
- The maximum distance vertical frameworks is 610 mm.
- The maximum distance horizontal frameworks is 1220 mm



Moisture Resistant

2. Screw Position.



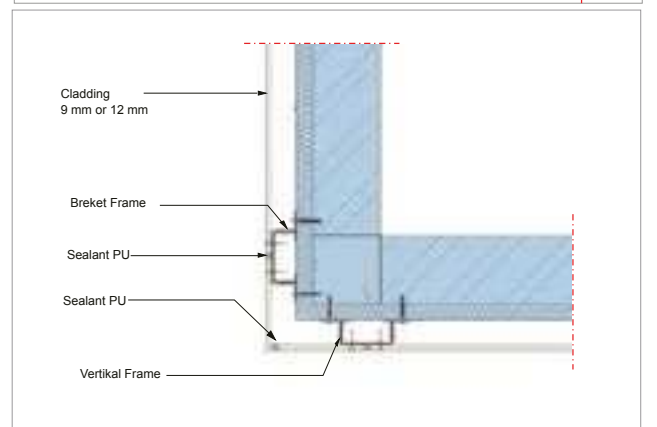
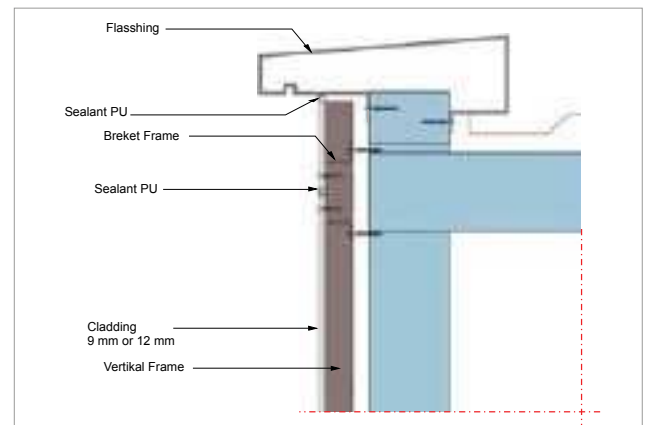
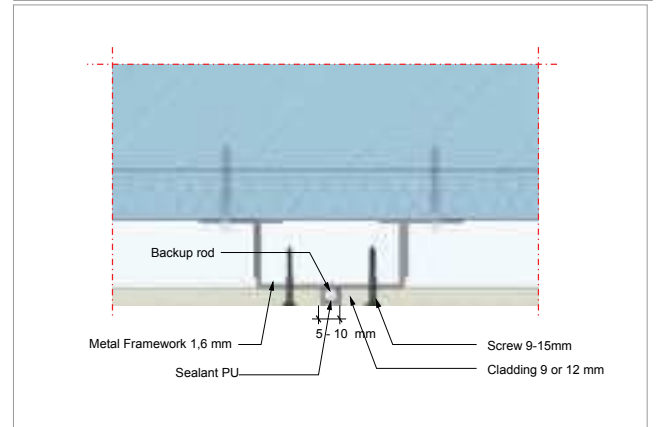
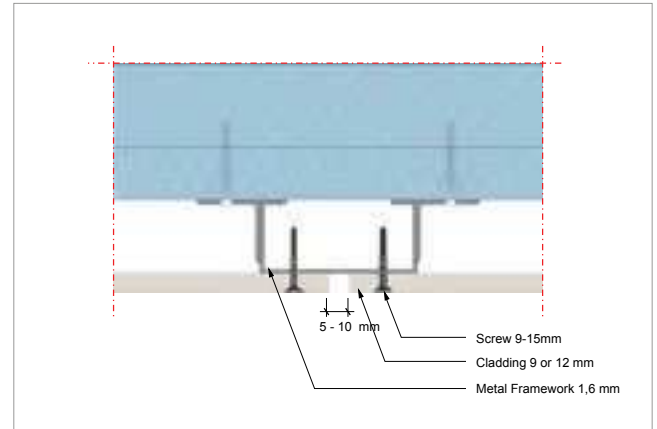
- The minimum distance between the screw and the corner of the LUXER CLADDING is ± 50 mm for width side and ± 100 mm for length side, while the minimum distance between the screw and edge of LUXER CLADDING is 15 mm.
- The Maximum distance between screws on the outside of panel is 200 mm, while the maximum distance between screw on the middle of panel is 300 mm.
- LUXER Screw 9-15mm is countersunk and covered by epoxy/cement grout to avoid corrosion.

3. Joint.

- Joint between LUXER CLADDING could apply open joint system or flexible joint applying sealant to get the best result. It is recommended to allow similar gap for each joints). It is recommended to allow gap about ± 10 mm between the panel on exterior application.
- For any joint that Flexible joint system, is recommended to apply sealant that contains of Polyurethane or sealant which has high elasticity, resistant to wheather, high performance adhesive and paintable.

4. Finishing.

- For Finishing processed of LUXER CLADDING water- base paint could be use.



PLANK AND PLINT APPLICATION



They have all of the advantages of LUXER BOARD product and also resistant to weather

LUXER PLANK SMOOTH, LUXER PLANK BEVEL, LUXER PLANK ROSEWOOD, LUXER PLANK MAHOGANY & LUXER DECO

I. ADVANTAGES

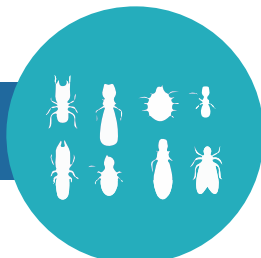
LUXER Plank Smooth , LUXER Plank Bevel, LUXER Plank Rosewood, LUXER Plank Mahogany and LUXER Deco are the product of LUXER BOARD which is produce some variant sizes for exterior application as a plank or siding plank. They have all of the advantages of LUXER BOARD product and also resistant to weather, so it is able for exterior application.

II. PRODUCT INFORMATION

A. Function

- **LUXER Plank Smooth** is a cement board plank that has profile on its edge, so it could beautify the buildings.
- **LUXER Plank Bevel** is a cement board plank that has square edge for minimalist and economical buildings.
- **LUXER Plank Mahogany** is a cement board plank that is designed of wood pattern on the surface, so it could present natural wood concept on the buildings.
- **LUXER Plank Rosewood** is a cement board plank that is designed to resemble flat wood and smoother materials, so it could be replace the wooden board material.

Termite Resistant



- **LUXER Deco** is used for listplank applications to enhance the aesthetic value of the building and give it a more ethnic appearance.

B. Size and Application.

- LUXER Plank Smooth

T x W x L (mm)	Weight (Kg)	Application
8 x 100 x 2440	3.4	Listplank / Skirting / Siding
8 x 200 x 2440	6.8	Listplank / Siding
8 x 300 x 2440	8.4	

- LUXER Plank Bevel

T x W x L (mm)	Weight (Kg)	Application
9 x 75 x 2440 BV1/BV2	2.8	Plint / Siding
9 x 100 x 2440 BV1/BV2	3.8	Listplank / Skirting / Siding
9 x 200 x 2440 BV1/BV2	7.5	Listplank / Siding
9 x 300 x 2440 BV1/BV2	11.3	

- LUXER Plank Rosewood

T x W x L (mm)	Weight (Kg)	Application
8 x 200 x 3000	7.5	Listplank / Skirting / Fence / Siding
8 x 300 x 3000	11.3	Listplank / Fence / Siding

- LUXER Plank Mahogany

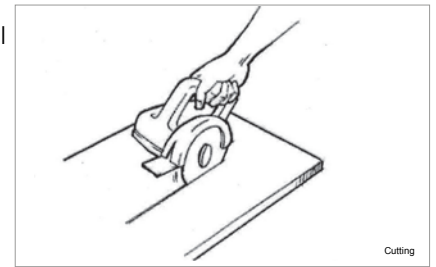
T x W x L (mm) SE	Weight (Kg)	Application
8 x 100 x 3000	3	Listplank / Skirting Fence / Siding/
8 x 200 x 3000	8	
8 x 300 x 3000	11	

- LUXER Deco

Thickness (mm)	Width (mm)	Length (mm)	Application
9	200/300	1200	Listplank / Skirting Fence / Siding/

C. Cutting

For cutting the panel it is recommended to use circular saw or grinder which is equipped with blade that could cut stones.



D. Nail and Screw

1. Nail.

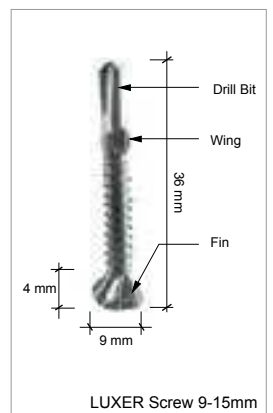
For plank application which is sustained by wood framework could apply LUXER nail. It has a better strength than a common nail, so it is very suitable for plank application.



2. Screws.

For plank application which is sustained by metal framework could apply LUXER Screws for 9 - 15 mm

This screw is design to have it's own bit drill (self-drill) so it could pierce and through the metal framework which has thickness 3 mm. If the frame applied is thicker, the framework has to be countersunk first by metal drill.



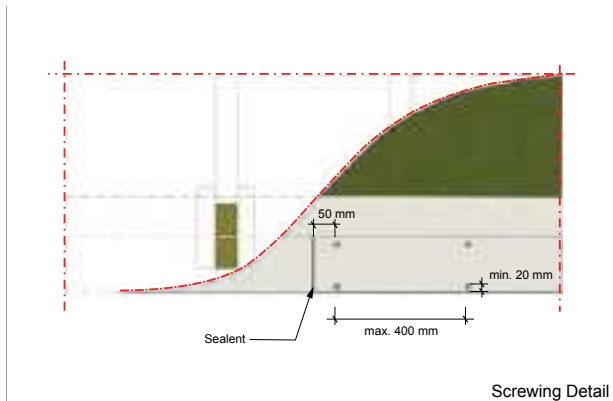
III. APPLICATION DETAIL AND CONSTRUCTION

A. Plank

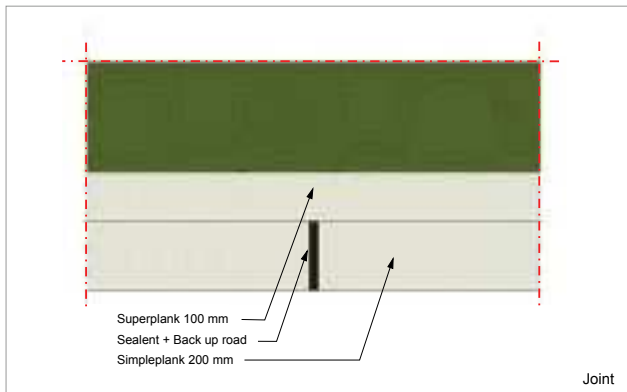
1. Frame.

- Wood framework, wood 50/70 mm
- Light metal Framework
- Hollow Steel and CNP

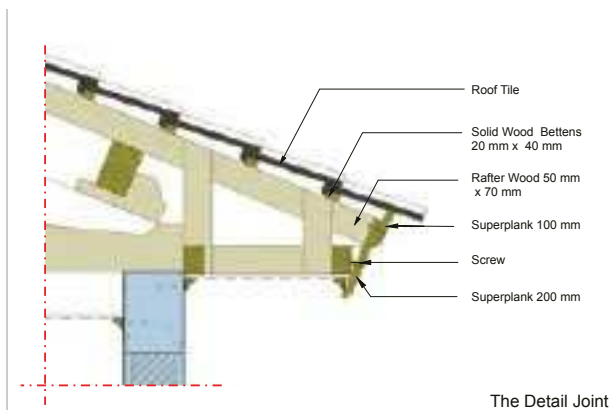
2. Screw Position.



3. Joint.



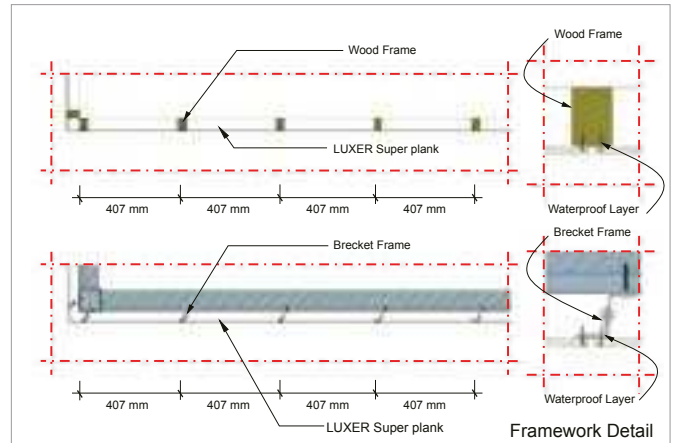
4. Finishing.



For Finishing process on the plank application of LUXER BOARD could apply water base and oil base paint, it is recommended to apply the paint which is resistant to weather. To emphasize the natural wood colour it is recommended to cover the plank with the polish.

B. Siding

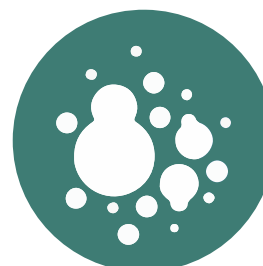
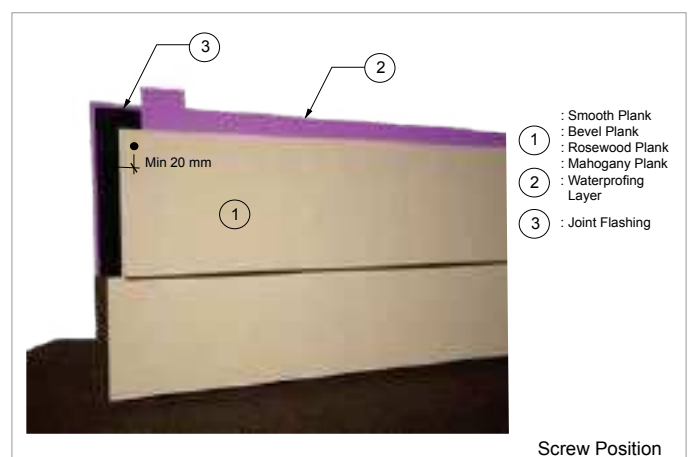
1. Frame.



- Wood framework 50/70 mm
- Metal frameworks Thickness 1.2 mm
- The Distance between frames which is recommended is 407 mm

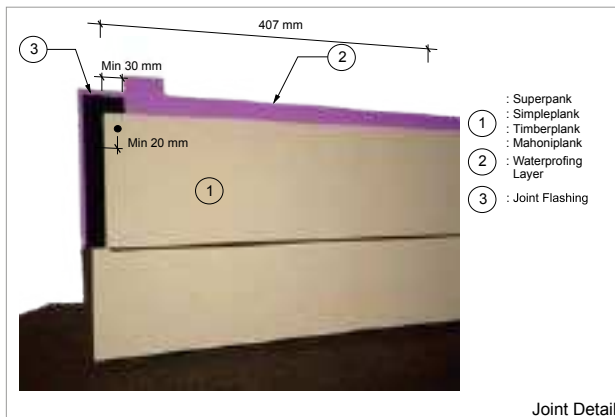
2. Screw Position.

For this application, the minimum distance between screw and edge of the board is 20 mm (look at the picture).



Fungi Resistant

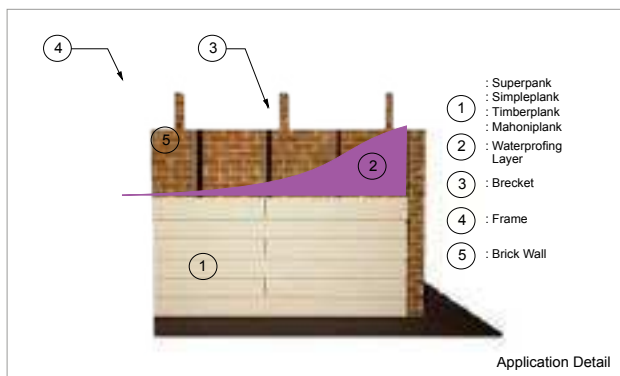
3. Joint.



There are some techniques of joint on siding plank application:

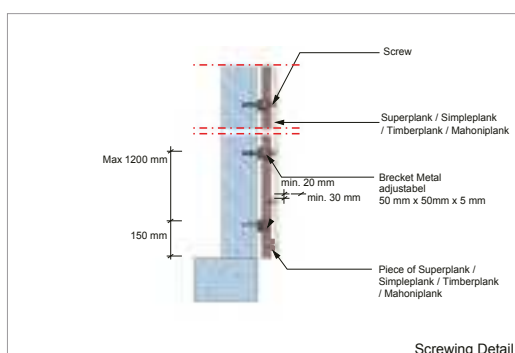
- Sealent which contains of polyurethane
- The joint is fastened by joint flashing (look at the picture)
- Or the width of the joint flashing that is recommended is 60 mm.

4. Finishing.



For Finishing on siding plank application could apply water base or oil base paint. Because it is an external application, so it is recommended to apply the paint which is resistant to the weather. To emphasize the colour of the wood for timberplank application, you could apply polish.

Detail of siding plank installation



C. Skirting

1. Screws Position

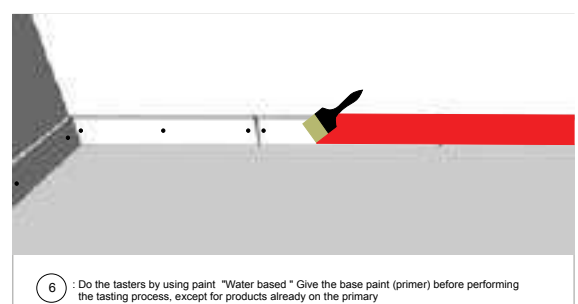
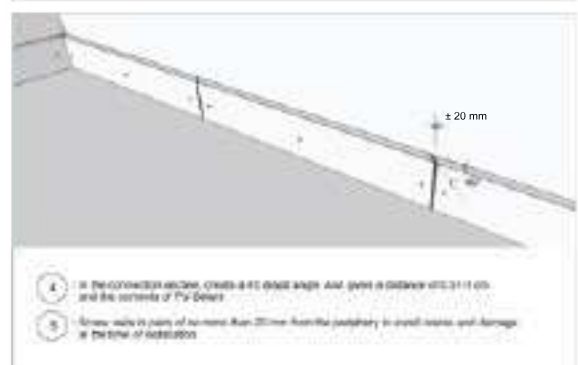
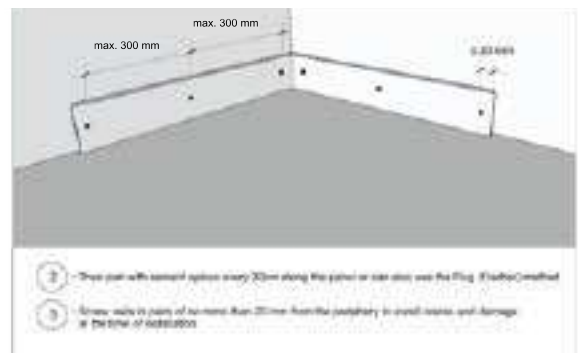
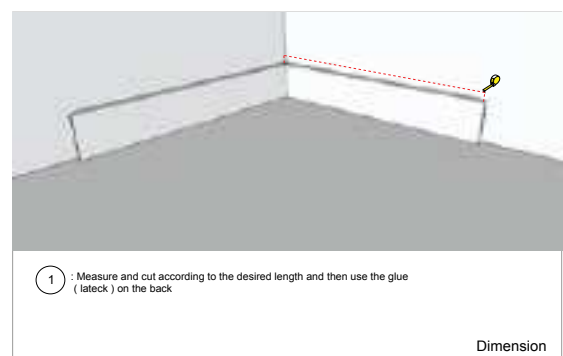
For this application, the minimum distance between screw and edge of the board is ± 20 mm and distance between screw is max 300 mm.

2. Jointing

joint on skirting application is using PU sealant.

3. Finishing

For Finishing on skirting application could apply water base paint.



INTERLOCK SERIES



They have all of the advantages of LUXER INTERLOCK product and also resistant to weather

LUXER INTERLOCK SMOOTH, LUXER INTERLOCK ROSEWOOD, AND LUXER INTERLOCK MAHOGANY

I. PRODUCT INFORMATION

LUXER Interlock can be installed as facades and sidings on walls it will produce a smooth and beautiful line (profile) at each joint of the board. With the Luxer Interlock, facade or siding installation will be very easy and efficient.

Thickness (mm)	10	10	10
Length (mm)	3000	3000	3000
Width (mm)	150	200	300

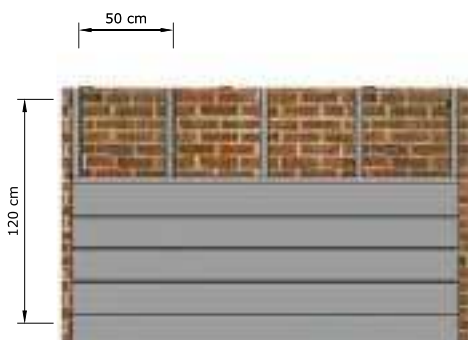
II. PRODUCT DISPLAY

INTERLOCK
Smooth

INTERLOCK
Rosewood

INTERLOCK
Mahogany





III. INTERLOCK APPLICATION

FRAMES

1. **Metal stud frames** 40/60 mm or 50/70 mm.
2. **Hollow frames** combination 0/40 mm and 20/40 mm which has minimum thickness 0,35 mm.

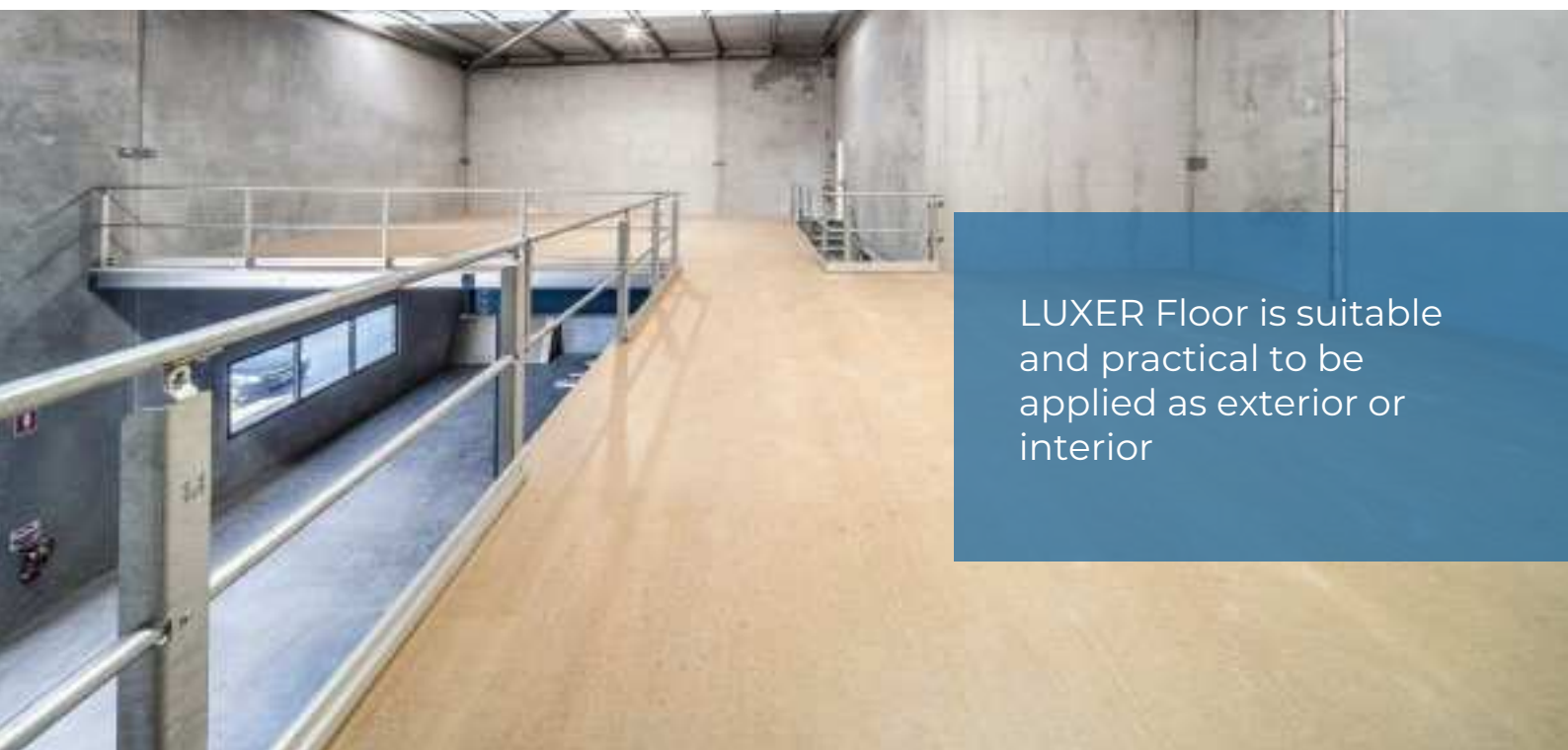
IV. INTERLOCK SCREW POSITION

1. Screw with a distance of 20mm from the edge of the top board "tounge"
2. Oversunk to a depth of 5mm before screwing with a larger diameter drill.

IV. INTERLOCK INSTALLATION

Install the next board right on the "tongue and groove". Give a 5 -10 mm gap 0.5-1cm between each panel.

FLOOR APPLICATION



LUXER FLOOR

I. ADVANTAGES

LUXER Floor is one of the LUXER BOARD products that can be applied to floors with recessed on both sides and smooth surface. The thickness of board is 15 and 20 mm so it is strong and safe to use on the floor.

II. PRODUCT INFORMATION

A. Function

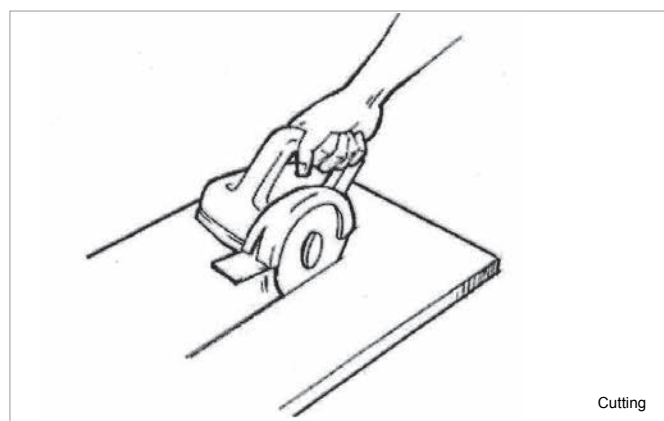
LUXER Floor is suitable and practical to be applied as exterior or interior in order to add to the aesthetic value of a building.

B. Size and Application

T x W x L (mm) SE	Weight (Kg)	Application
15 x 1220 x 2400	78.4	Floor
20 x 1220 x 2400	104.7	

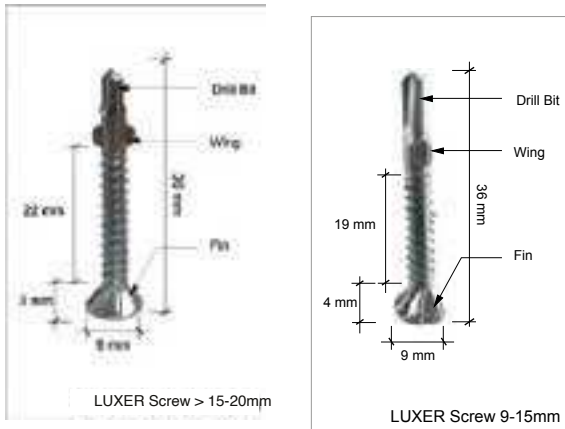
C. Cutting

For cutting the panel it is recommended to use circular saw or grinder which is equipped with blade that could cut stones.



D. Screw

1. Screws

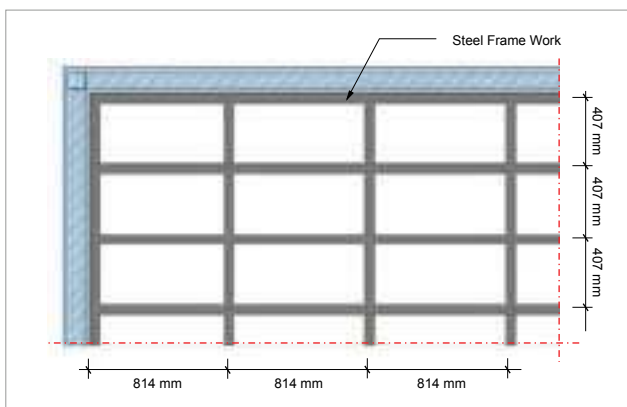


For LUXER Floor application which is sustained by metal framework could apply LUXER Screws for >15 – 20 mm.

This Screw is design to have it's own bit drill (self-drill) so it could pierce and through the metal framework which has thickness 3 mm. If the frame applied is thicker, the framework has to be countersunk first by metal drill.

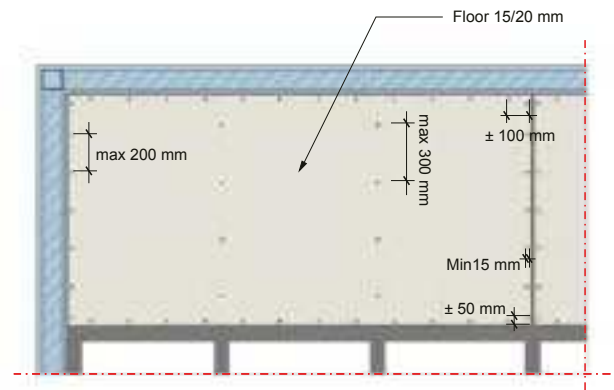
III. CONSTRUCTION AND DETAIL OF APPLICATION

1. Frame



- Light metal Framework , thickness min 2.3 mm.
- Hollow Steel and CNP, thickness min 2.3 mm.
- The installation of frame which is recommended is maximum 407 x 814 mm for 15 mm thickness and maximum 610 x 1220 mm for 20 mm thickness.

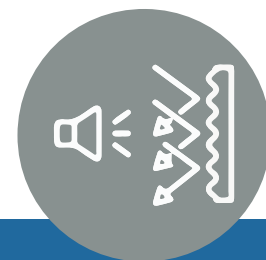
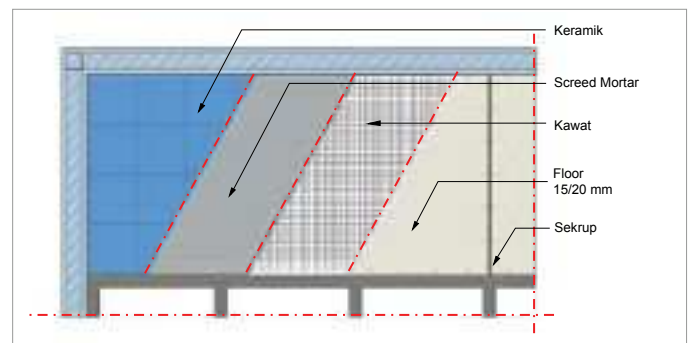
2. Screw Position



3. Jointing

Jointing application on the floor is more flexible, and not required compound on the gap between the panel. It depends on which kind of finishing that is needed. It is recommended to apply sealant which contains PU (polyurethane).

4. Finishing



Sound Insulation

DECK APPLICATION



LUXER Deck Mahogany is product of LUXER BOARD with wood surface so that the floor feels and looks like wood.

LUXER DECK MAHOGANY & LUXER DECK SMOOTH

I. ADVANTAGES

- **LUXER Deck Mahogany** is product of LUXER BOARD with wood surface so that the floor feels and looks like wood.
- **LUXER Deck Smooth** is product of LUXER board with camber edges on both sides with a smooth surface.

II. PRODUCT INFORMATION

A. Function

Both of these products have the same function as a deck and to beautify a building, depending on the choices and needs of consumers.

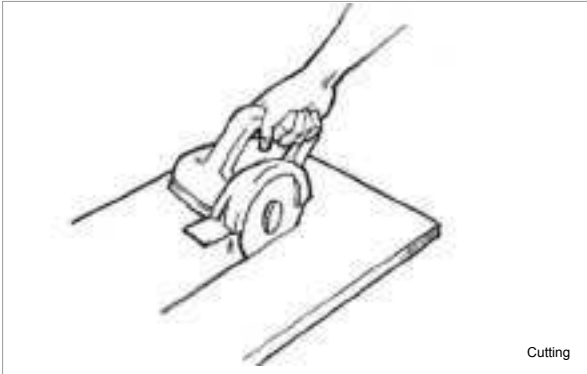
B. Size and Application

T x W x L (mm) CE2	Weight (Kg)*	Application
20 x 100 x 2400	8.2	Decking
20 x 200 x 2400	16.4	
20 x 300 x 2400	24.6	

*approximately

C. Cutting

For cutting the panel it is recommended to use circular saw or grinder which is equipped with blade that could cut stones.



D. Screws

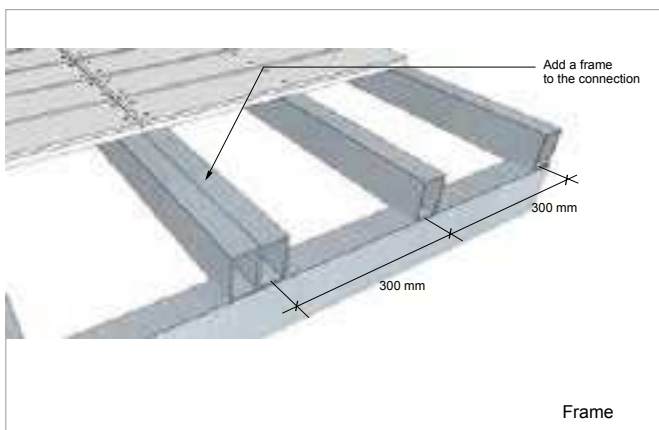


1. Screws

For LUXER Deck Series application which is sustained by metal framework could apply LUXER Screws for >15 – 20 mm.

This Screw is design to have it's own bit drill (self-drill) so it could pierce and through the metal framework which has thickness 3 mm. If the frame applied is thicker, the framework has to be counterunk first by metal drill.

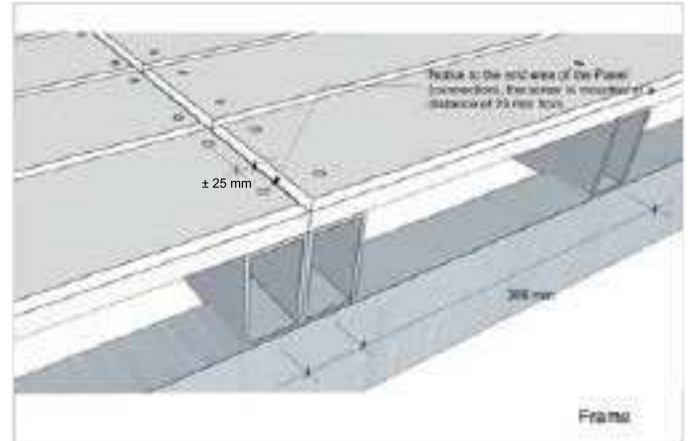
III. CONSTRUCTION AND DETAIL OF APPLICATION



A. Frameworks:

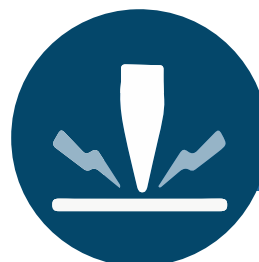
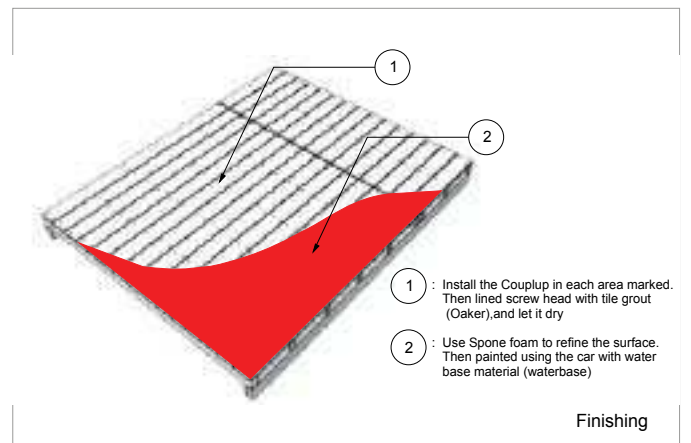
- Metal frame CNP 100-125, Thickness 2-3 cm
- The installation of support frame which is recommended is maximum 300 mm.

B. Position of the Screws



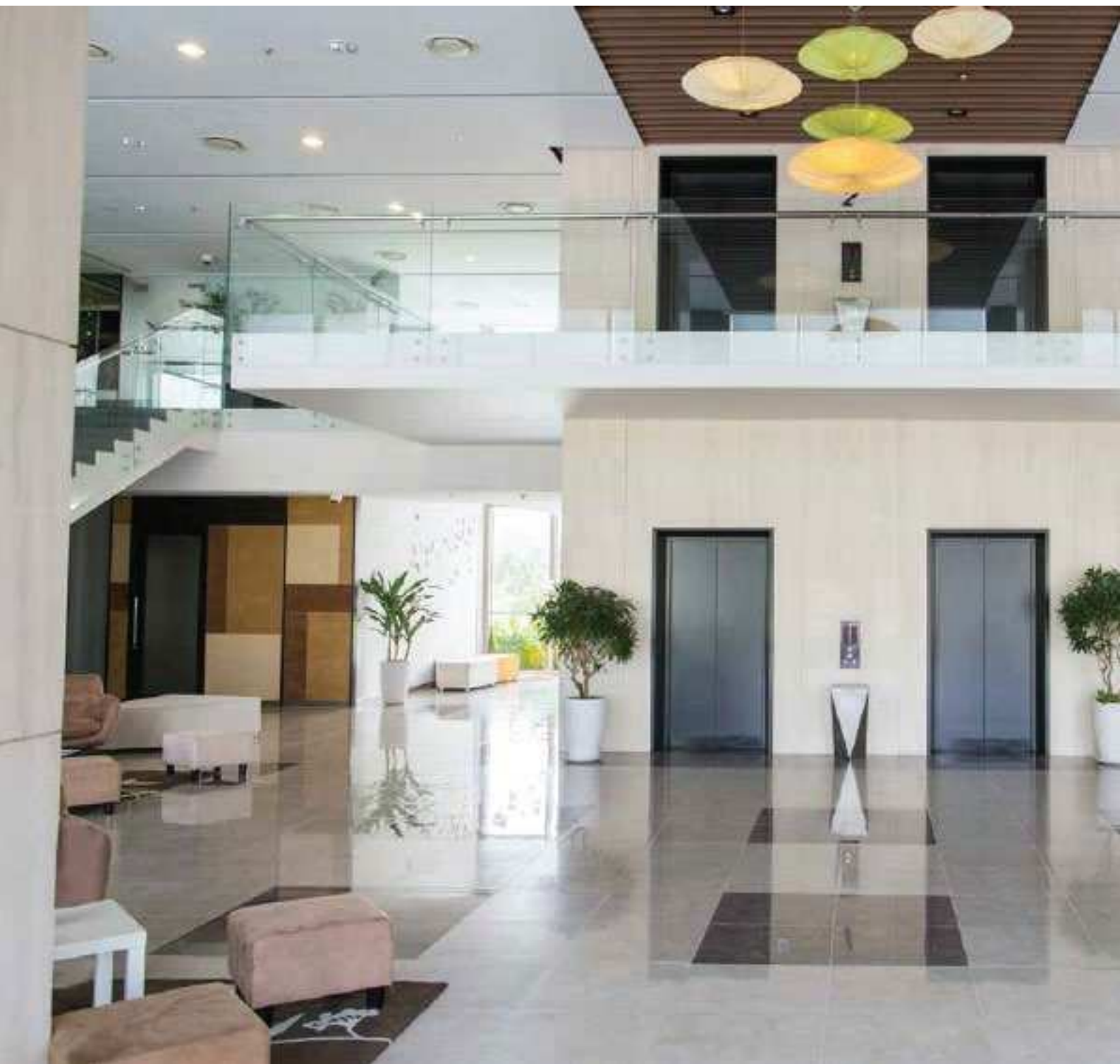
C. Finishing

For finishing on Deck application could apply wood paint for fiber cement board.



Strong & Durable

DECORATIVES APPLICATION





The LUXER BOARD Deco is a cement board product from LUXER BOARD that can be applied outdoors and indoors

I. ADVANTAGES

The LUXER BOARD Deco is a cement board product from LUXER BOARD that can be applied outdoors and indoors and functions as a building decoration to make it look more beautiful.

In addition to the designs and sizes that are already available, consumers can order with a customized design as well as the desired size and thickness.

II. PRODUCT INFORMATION

A. Function

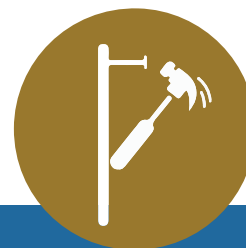
- **LUXER Deco** is an innovative product from LUXER BOARD that can be used for various applications such as : partition, ceiling, walls etc.

B. Size and Application

1. LUXER Deco

Thickness (mm)	Width (mm)	Length (mm)	Application
6-20	Max 1200	Max 2400	Wall, Partition, Sketsel, Ceiling, etc

*Available to customize design and dimension with condition apply

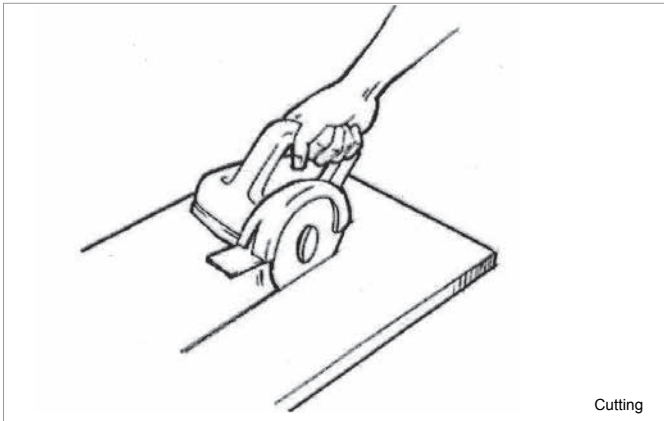


Easy Application

C. Cutting

Specially for decopanel motifs are advised to order the appropriate size so that it is no longer necessary to cut. It is not advisable to cut yourself to avoid damage to the material unless it has been consulted with the experts first.

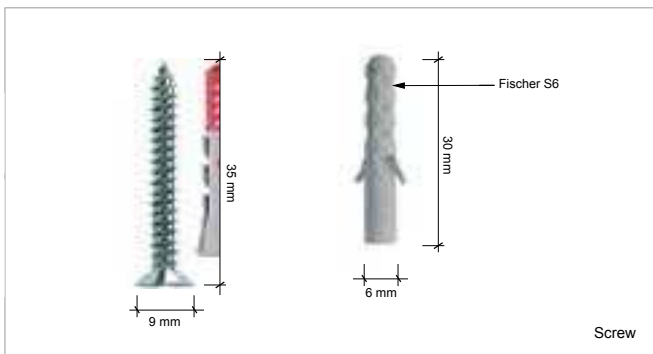
For cutting another LUXER BOARD Deco it is recommended to use circular saw or grinder which is equipped with blade that could cut stones.



D. Screws

1. Screws

For the application which is sustained by metal framework could apply LUXER Screws depends on the thickness of board.



III. CONSTRUCTION AND DETAIL OF APPLICATION

A. Frames

LUXER BOARD could also be applied on metal frame such as: galvanized steel, metal furring, and another type of metal frame which has thickness 0.4 mm – 1.2 mm.

The right method of frame installation is crucial in supporting the result of LUXER BOARD application.

B. Screws Position

The minimum distance between nails or screws with the corner of LUXER BOARD is 50 mm.

The minimum distance between nails or screws with the edge of LUXER BOARD is 12 mm.

The Maximum distance between nails and screws is not more than 200 mm (on the side of board).

C. Jointing

For Interior Application, can use flush joint system.

For Exterior Application, joint between Decoratives panel could apply open Joint system or flexible joint (Applying sealant to get the best result. It is recommended to allow similar gap for each joints). It is recommended to allow gap about ± 10 mm between the panel on exterior application.

For any joint that Flexible joint system, is recommended to apply sealant that contains of Polyurethane or sealant which has high elasticity, resistant to wheather, high performance adhesive and paintable.

D. Finishing

For Finishing on decoratives panel could apply with water base paint.

Smooth Surface



PRODUCT TECHNICAL DATA FORM

Property Items	Value of Test	Standard
Tolerance of Thickness:		
≤ 10 mm	± 0.3 mm	ISO 8336 ; 2009
> 10 mm	± 5%	ISO 8336 ; 2009
Tolerance of Length	+ 0 ; -2 mm	ISO 8336 ; 2009
Tolerance of Width	+ 0 ; -2 mm	ISO 8336 ; 2009
Tolerance of Squareness	≤ 3 mm	ISO 8336 ; 2009
Tolerance of Straightness	≤ 1. 5 mm	ISO 8336 ; 2009
Density	± 1350 kg/m ³	ISO 8336 ; 2009
Modulus of Rupture	> 100 kg/cm ²	ISO 8336 ; 2009
Water Absorption	23 - 25 %	ASTM C1186
Water Conten	6-9 %	ASTM C1186
Non combustible	Pass	BS 476 Part 4 :1970

ACCESORIES APPLICATION



LUXER nail is suitable to be applied on ceiling and partition which is fixed on by wood frame

To get the maximum result of LUXER BOARD application, we provide accessories to support LUXER BOARD application such as:

1. LUXER Nail

LUXER nail is suitable to be applied on ceiling and partition which is fixed on by wood frame. LUXER Nail is designed in such a way that it is equipped with the bigger and thinner head, so it's easy to be countersunk.

The LUXER nail is provided in two types, galvanized (rust proof) and non galvanized.

2. Screw

To fasten LUXER BOARD on metal frame such as Hollow, metal furring and metal stud LUXER screw has four types:

A. LUXER Screw 4mm

This screw is made for the application of LUXER board 4 mm. This screw is equipped by a thinner head and single thread, so it's very suitable for LUXER BOARD 4 mm application.

B. LUXER Screw $\geq 5 - 8$ mm

This screw is applied on LUXER BOARD 5 mm for 8 mm. and not recommended for the board which has

thickness 4 mm. This LUXER Screw has a head equipped with fins and double thread, so it's easier to be countersunk when it's applied.

C. LUXER Screw 9 – 15 mm

This screw is applied on all product who has thickness 9 – 15 mm

D. LUXER Screw $\geq 15 - 20$ mm

This screw is applied on all product who has thickness $>15 - 20$ mm

3. Compound A+B

This Compound is used to fill the gap between the joints of the LUXER BOARD.

4. LUXER Tape

The function of LUXER Tape is to cover and strengthen the joint, also for intermediary between surface of Compound A+B and LUXER PUTTY.

5. LUXER PUTTY

LUXER PUTTY is applied as cover on the surface of joint and the hole of screw to make a smooth surface.

PRODUCT GUARANTEE

We Guarantee that our products are sold in good condition without damage or faulty production or its raw materials. This product warranty does not cover damage caused by:

1. Transportation and its agent sending the goods to the customers as it is out of the company's control.
2. Installation quality and system of workers as various factors affect good and right installation system.
3. Suitability of our product on particular application which are not according to our recommendations.



LUXER BOARD

FOR THE BUILDINGS OF TOMORROW

www.luxerboard.com

Manufactured by :

PT. BANGUNPERKASA ADHITAMASENTRA



GRAHA GRC board
Jl. S. Parman Kav. 64 Jakarta CA 11410
Indonesia



Phone : (+62) 21 53 666 800 (hunting)
Whatsapp : (+62) 856 2480 5662
Fax : (+62) 21 53 666 720



Email : sales@grcboard.com